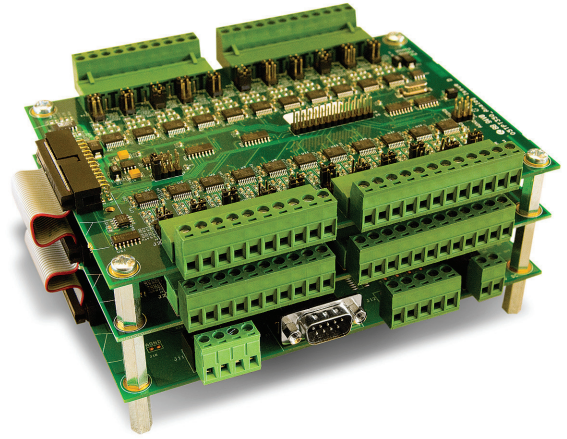


# EnerSure®

## Branch Circuit Power Meter



## BEFORE YOU INVEST KNOW WHAT YOU'RE PAYING FOR

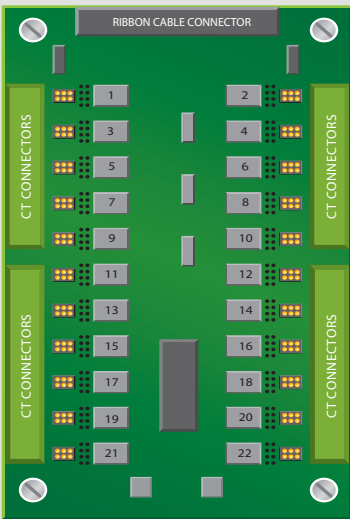
	EnerSure®	Competitors
3RD PARTY VERIFIED CLASS 1 ACCURATE	✓	+/- 2% - 5%
MONITOR 1, 2 AND 3-POLE CIRCUITS ON THE SAME BOARD	✓	X
INSTALL HOT	✓	X
ETHERNET ONBOARD	✓	X
SUPPORTS CT'S OF VARIOUS SIZE AND LENGTH	✓	X
NFPA70e COMPLIANT	✓	X

*Per circuit data, Class 1 applies to system level for TrendPoint as well.*

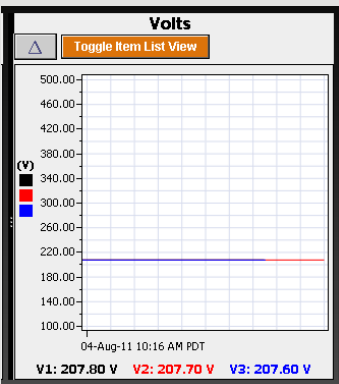
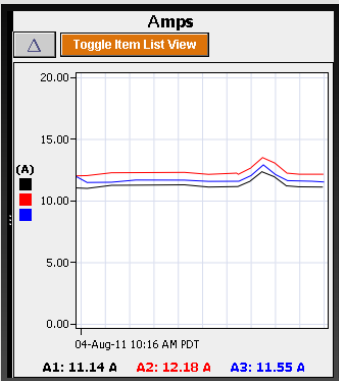
The EnerSure® Branch Circuit Power Meter is as different from a traditional BCM as a smart meter is from a mechanical meter. EnerSure® gathers precise performance data from IT and cooling loads – amps, volts, power factor, watts, kWh energy -- and is the only product certified to provide utility-grade data per circuit. Power

metrics from EnerSure® can integrate with any DCIM software via Modbus or SNMP.

EnerSure® provides the most accurate, flexible, and adaptable metering solution on the market and is used in some of the most prestigious and critical facilities in the world.



EnerSure® Data Gathering Module (DGM) shown with 22 Power Meter-on-a-chip units.



888-363-3873  
888-ENERSURE

1595 East 6th Street  
Corona, CA 92879  
www.trendpoint.com

info@trendpoint.com

## Accurate

TrendPoint employs 22 Power Meter-on-a-chip units on each Data Gathering Module (DGM). With up to 4 DGMs per unit, each EnerSure® can accommodate up to 88 circuits of utility grade power data.

**Amperage:** With the most accurate CT's on the market, the EnerSure® allows you to manage your circuit capacities with greater reliability. Our CT's are .5% accurate from 1 to 100% of the scale, giving you more visibility into your usage.

**Voltage:** With the ability to provide both L-N and L-L readings on individual circuits, the EnerSure® allows you to measure your voltage in various configurations. Through the use of our UL Listed Potential Transformer you don't have to worry about dangerous voltage on the meter, as our installations can comply with NFPA 70e standards.

**Power Factor:** The key to accurate, utility grade data is the ability to measure power factor at the circuit level. Our patented technology measures power factor on each circuit and provides the ability to detect troubled equipment and energy waste.

**Wattage:** The true measurement of heat. By associating each circuit with the cabinet or rack that it feeds, you can see the actual wattage of heat in each cabinet and adjust loads as necessary.

**kWh Energy:** Energy charge backs and related carbon emission reporting are increasing. Laws such as California Public Utilities Commission 07-09-004 require that any charge back for power usage MUST be done with meters that meet a utility grade standard at the Individual Circuit Level.

## Flexible

Add any sized CT to any circuit with just the click of a mouse. No hardware to configure. Our standard split-core CT's are available in any size from our standard 75 and 300 amp series to 4000 amps.

### Full Ethernet, RS232 and RS485 connectivity

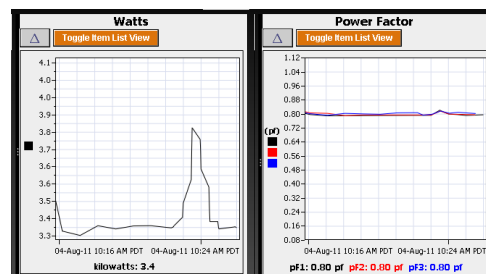
EnerSure is the only product that provides all standard forms of data connectivity without the need for gateways or additional hardware.

### Data provided by Modbus, Modbus TCP and SNMP MIB

The open protocols allow the EnerSure® to be easily integrated into any monitoring and management system. Multiple sessions are supported for use with multiple software systems.

## Adaptable

EnerSure® is the most versatile meter available on the market. From switchgear to the branch circuit panel boards, it adapts to your specific monitoring needs. Various CT sizes and CT lead lengths as well as 1, 2, and 3 poles circuits can be mixed throughout the EnerSure® meter.



Open Energy Management Equipment

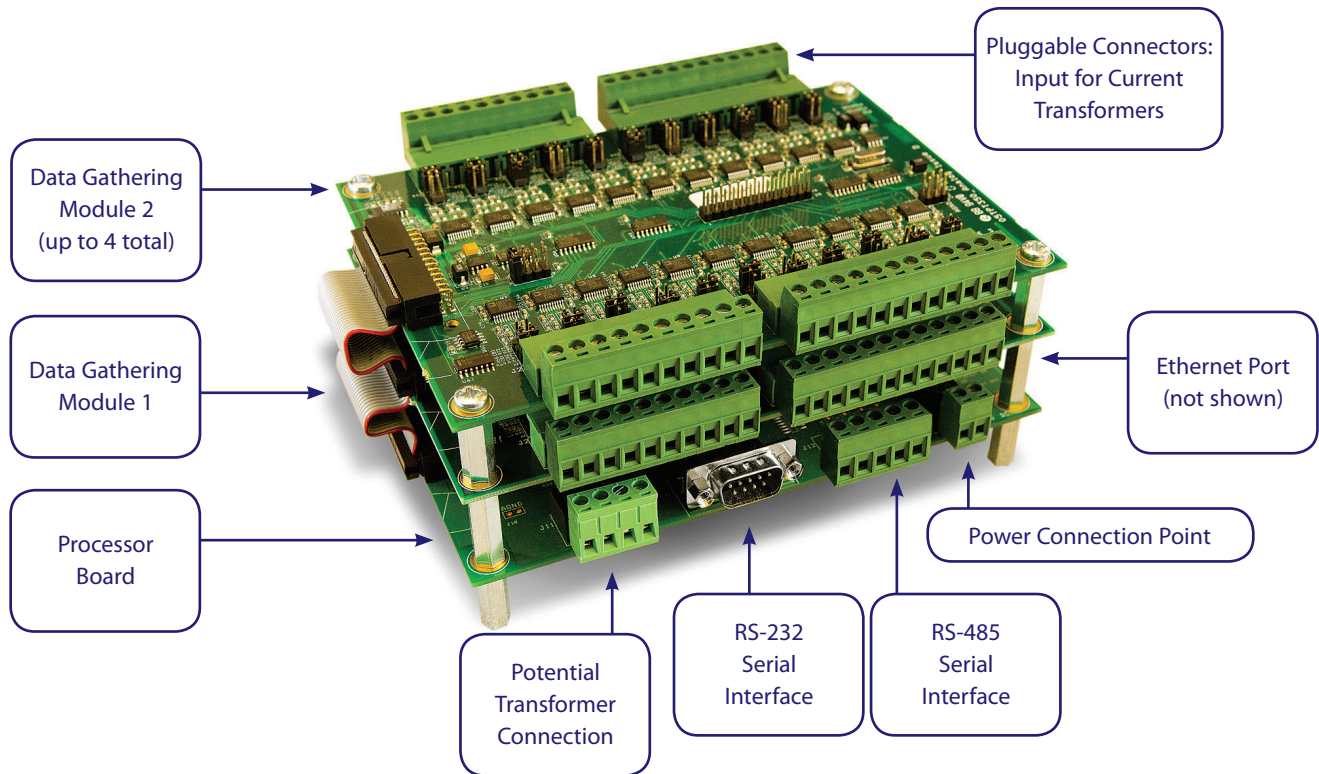


Certified Utility Grade Accuracy by METLABS

ANSI C12.1  
IEC 62053-21

## EnerSure Module

(44 Circuit Metering Module Shown)



### DIMENSIONS

Length	Width	Height
6.5 in	4.60 in	3.25 in
165.1 mm	116.84 mm	82.55 mm

### ELECTRICAL PROPERTIES

Energy Accuracy	±1%	Supply Voltage	24VDC
Power Accuracy	±1%	Supply Amps (Max)	250mA
Operating Temp	32° – 100° F	Frequency	50-60HZ

### COMMUNICATIONS

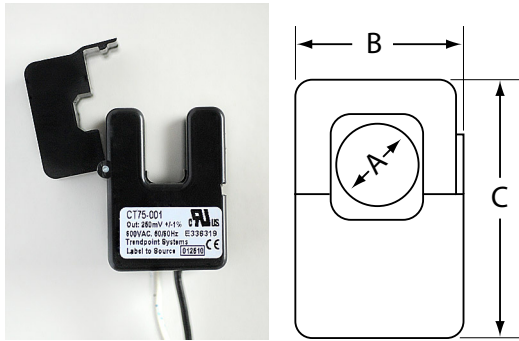
Ethernet	Modbus TCP, SNMP MIB
Serial	Modbus RTU via RS-232 and RS-485

### CERTIFICATIONS

EN613226, 61000-3-2 & 3-3	CE Marked/Tested
IEC61036/60687, IEC62053-21, and IEC62053-22	IEC Compliant and Certified UL Listed 916

# CURRENT TRANSFORMERS and POTENTIAL TRANSFORMER

## Current Transformer – 75A



### DIMENSIONS

A	B	C
.40 in	1.25 in	1.60 in
10.16 mm	31.75 mm	40.64 mm

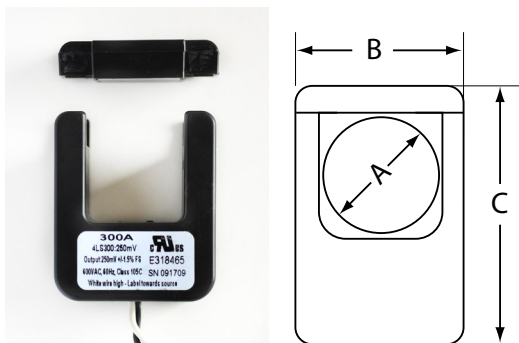
### ELECTRICAL PROPERTIES

Accuracy	±.5%	Rated Current	75A
Linearity	1-100%	Current Ratio	3000:1
Max Voltage	600V	Frequency	20-400HZ

### CERTIFICATIONS

EN61010-1	UL Listed 1015	CE Marked/Tested
-----------	----------------	------------------

## Current Transformer – 300A



### DIMENSIONS

A	B	C
1 in	2.125 in	2.375 in
25.4 mm	53.975 mm	60.325 mm

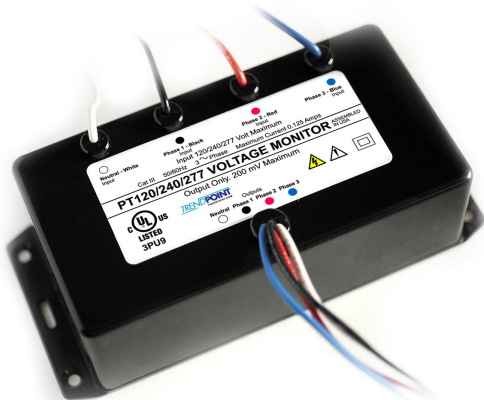
### ELECTRICAL PROPERTIES

Accuracy	±.5%	Rated Current	300A
Linearity	1-100%	Current Ratio	3600:1
Max Voltage	600V	Frequency	50-500HZ

### CERTIFICATIONS

UL Listed 1015 & 506	ETL Recognized
----------------------	----------------

## Potential Transformer



### DIMENSIONS

Length	Width	Height
5.90 in	3.125 in	1.95 in
148.86 mm	79.375 mm	49.53 mm

### ELECTRICAL PROPERTIES

Accuracy	±.5%	Rated Current	N/A
Linearity	.5%	Voltage Ratio	1200:1
Max Voltage	480V	Frequency	50-60HZ

### CERTIFICATIONS

TUV Certified	UL Listed 61010
EN61010-1	CE Marked/Tested