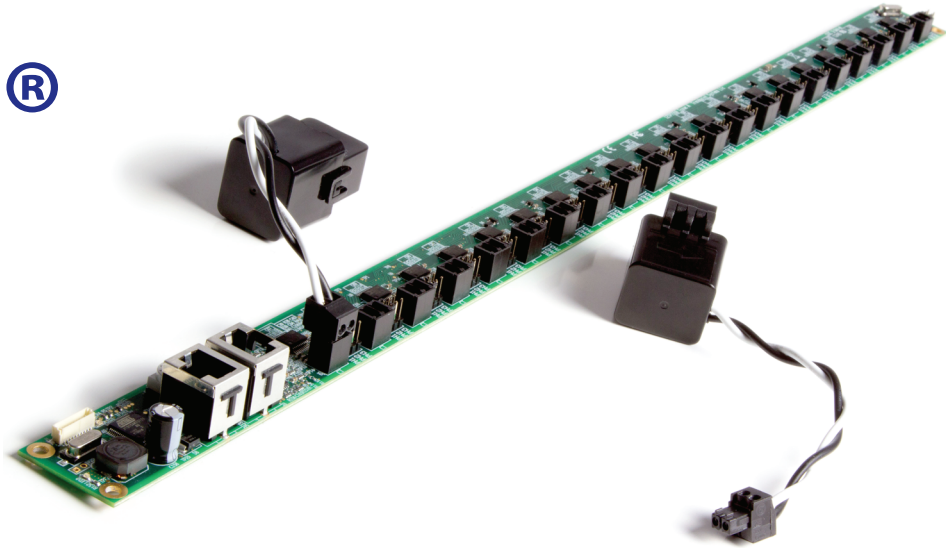


EnerSure[®] iBCPM

Intelligent Panel Board
Power Metering



	EnerSure [®] iBCPM	Competitors
3RD PARTY VERIFIED CLASS 1 ACCURATE	✓	⊕/- 2% - 5%
MONITOR 1, 2 AND 3-POLE CIRCUITS ON THE SAME BOARD	✓	✗
ETHERNET ONBOARD	✓	✗
ONBOARD ALARMS	✓	✗
SUPPORTS CT'S OF VARIOUS SIZE AND LENGTH	✓	✗
DATA AND EVENT LOGGING	✓	✗

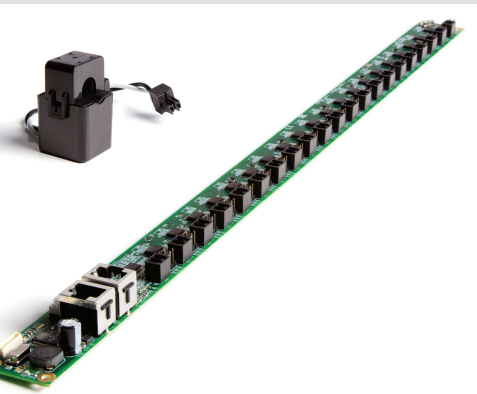
Per circuit data, Class 1 applies to system level for TrendPoint as well.

EnerSure iBCPM is the next generation of panel board power metering. EnerSure iBCPM installs on any panelboard configuration and gathers precise power information – amps, volts, power factor, watts and kWh – and is certified to provide utility-grade data on each branch circuit.

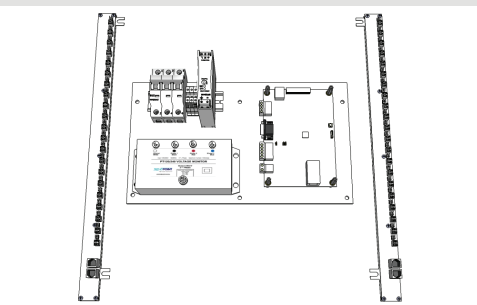
Power metrics from the iBCPM can integrate with any BMS or DCiM system via Modbus TCP, SNMP or BACnetIP.

Powered by the TrendPoint xD Processor, the iBCPM provides data and event logging as a standard feature.

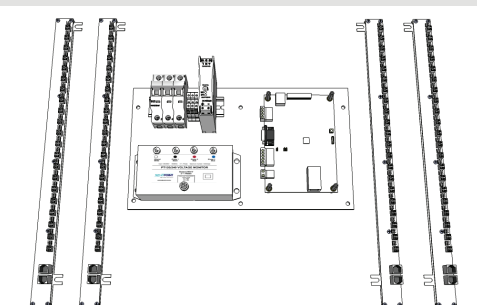
EnerSure iBCPM is part of the EnerSure platform of products that provides the most accurate, flexible, and adaptable power metering solutions in the market and is used in some of the most prestigious facilities in the world.



TrendPoint iBCPM Employs 21 Power Meter-on-a-chip units (shown with 75A CT)



iBCPM-42



iBCPM-84



951-444-2007
888-ENERSUR

1595 East 6th St., Suite 101
Corona, CA 92879
www.trendpoint.com

info@trendpoint.com

Accurate

EnerSure iBCPM employs 21 Power Meter-on-a-chip units on each panel board strip. With up to 4 panel board strips per unit, each EnerSure iBCPM can accommodate up to 84 circuits of utility grade panelboard power data.

Amperage: With the most accurate CTs on the market, EnerSure® iBCPM allows you to manage your circuit capacities with greater reliability. Our CTs are 0.5% accurate from 1 to 100% of the scale, giving you more visibility into your usage.

Voltage: With the ability to provide both L-N and L-L readings on individual circuits, EnerSure® iBCPM allows you to measure your voltage in various configurations.

Power Factor: The key to accurate, utility grade data is the ability to measure power factor at the circuit level. Our patented technology measures power factor on each circuit and provides the ability to detect troubled equipment and energy waste.

Wattage: The true measurement of heat. By associating each circuit with the cabinet or rack that it feeds, you can see the actual wattage of heat in each cabinet and adjust loads as necessary.

kWh Energy: Energy charge backs and related carbon emission reporting are increasing. Laws such as California Public Utilities Commission 07-09-004 require that any charge back for power usage MUST be done with meters that meet a utility grade standard at the Individual Circuit Level.

Flexible

EnerSure® iBCPM's pluggable CT design allows users to vary the CTs used in the system. Varying CT sizes can be utilized and added or removed after the system is deployed. CTs are available in any size from our standard 75 and 300 amp series to 4000 amps.

Full Ethernet: EnerSure® iBCPM is the only product that provides all standard forms of data connectivity without the need for gateways or additional hardware. The open protocols allow EnerSure® iBCPM to be easily integrated into any monitoring and management system. Multiple sessions are supported for use with multiple software systems.

Data Logging and Event Logging: The 9 onboard data logs can record 120 data points each with intervals as fast as 30 seconds. Using a standard *microSD* card, users can record thousands of time-stamped data points. The data logs can be downloaded as a .CSV file or delivered using Modbus TCP and BACnetIP protocols. The onboard event logs record alarm indications for sequence of events correlation.

Adaptable

EnerSure® iBCPM panel board strip can be linked with EnerSure Bus cards to provide additional monitoring up to 120 circuits on a single iBCPM system. Additional circuits can be added in 4 or 8 circuit groups.



Open Energy Management Equipment



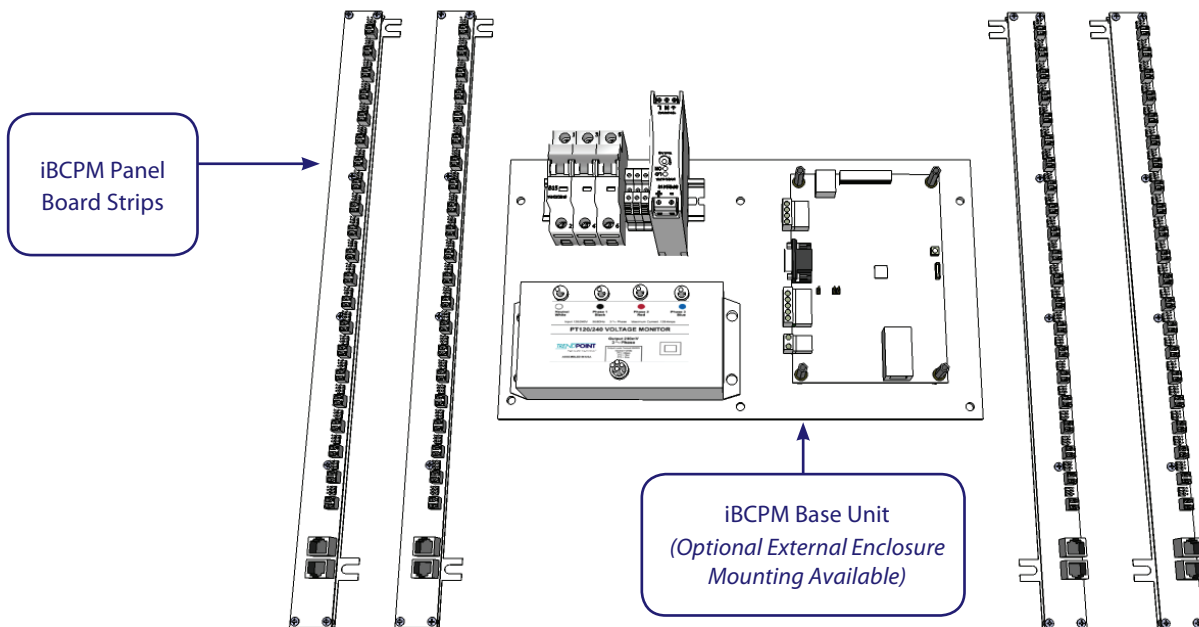
Certified Utility Grade Accuracy by METLABS

ANSI C12.1
IEC 62053-21



508A
INDUSTRIAL
CONTROL PANEL
FABRICATOR

EnerSure® iBCPM System (84 Circuit Metering System Shown)



iBCPM-84

ELECTRICAL PROPERTIES

Energy Accuracy	±1%	Supply Voltage	24VDC
Power Accuracy	±1%	Supply Amps (Max)	250mA
Operating Temp	32° – 100° F	Frequency	50-60HZ

COMMUNICATIONS

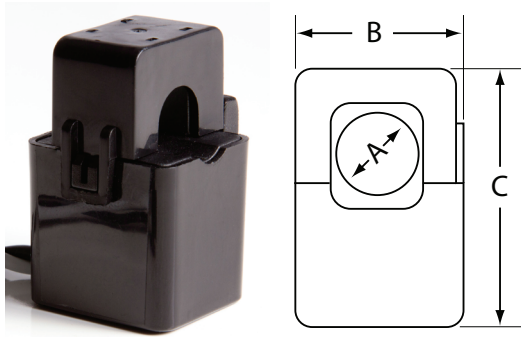
Ethernet	Modbus TCP, SNMP MIB, BACnetIP
----------	--------------------------------

CERTIFICATIONS

EN613226, 61000-3-2 & 3-3	CE Marked/Tested
IEC61036/60687, IEC62053-21, and IEC62053-22	IEC Compliant and Certified UL Listed 916

CURRENT TRANSFORMERS and POTENTIAL TRANSFORMER

Current Transformer – 75A



DIMENSIONS

A	B	C
.40 in	.75 in	1.56 in
10.16 mm	19.05 mm	39.5 mm

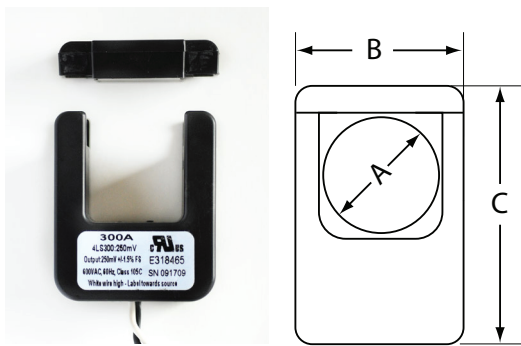
ELECTRICAL PROPERTIES

Accuracy	±0.5%	Rated Current	75A
Linearity	1-100%	Current Ratio	3000:1
Max Voltage	600V	Frequency	20-400HZ

CERTIFICATIONS

EN61010-1	ETL Listed	CE Marked/Tested
-----------	------------	------------------

Current Transformer – 300A



DIMENSIONS

A	B	C
1 in	2.125 in	2.375 in
25.4 mm	53.975 mm	60.325 mm

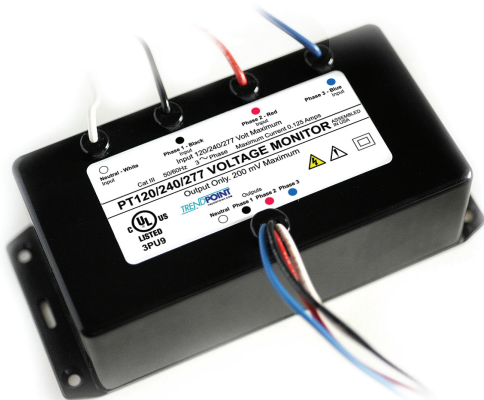
ELECTRICAL PROPERTIES

Accuracy	±0.5%	Rated Current	300A
Linearity	1-100%	Current Ratio	3600:1
Max Voltage	600V	Frequency	50-500HZ

CERTIFICATIONS

UL Recognized	ETL Recognized
---------------	----------------

Potential Transformer



DIMENSIONS

Length	Width	Height
5.90 in	3.125 in	1.95 in
148.86 mm	79.375 mm	49.53 mm

ELECTRICAL PROPERTIES

Accuracy	±0.5%	Rated Current	N/A
Linearity	0.5%	Voltage Ratio	1200:1
Max Voltage	480V	Frequency	50-60HZ

CERTIFICATIONS

TUV Certified	UL Listed 61010
EN61010-1	CE Marked/Tested